

SBT 12-500 Cart Assembly Instructions

Tools needed for Assembly:

- (1) 19 mm wrench
- (1) 18 mm wrench
- (2) 17 mm wrenches

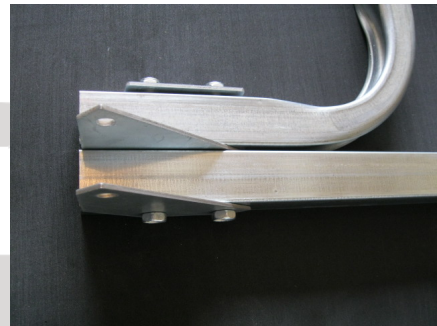
- 1) Lay out all parts neatly before assembly. As you assemble, leave all nuts and bolts semi loose. You will snug up everything upon completion of the cart.



- 2) Lay out main frame members and bunks.



- 3) With supplied hardware assemble the main frame using the supplied gusset plates.



- 4) The cart should resemble the below picture.

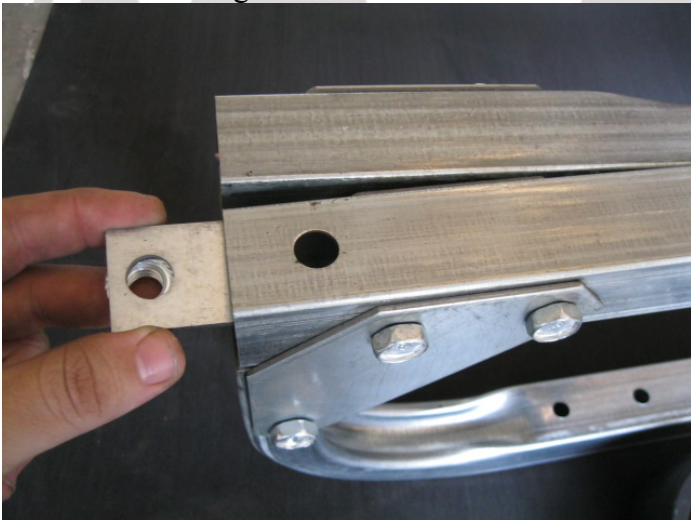


The brackets you see under the carpeted bunks can be positioned in two different locations depending on the width of ski's hull.

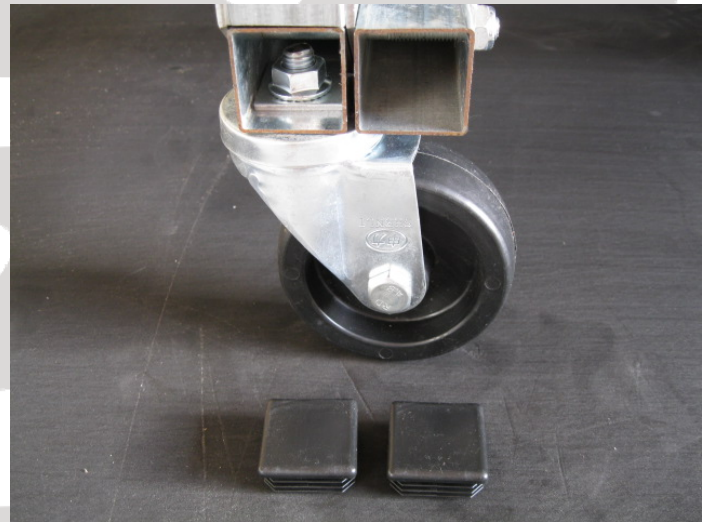
SBT 12-500 Cart Assembly Instructions



- 5) When installing the wheels, use the supplied metal reinforcement plates inside the square tube and tighten the nuts.

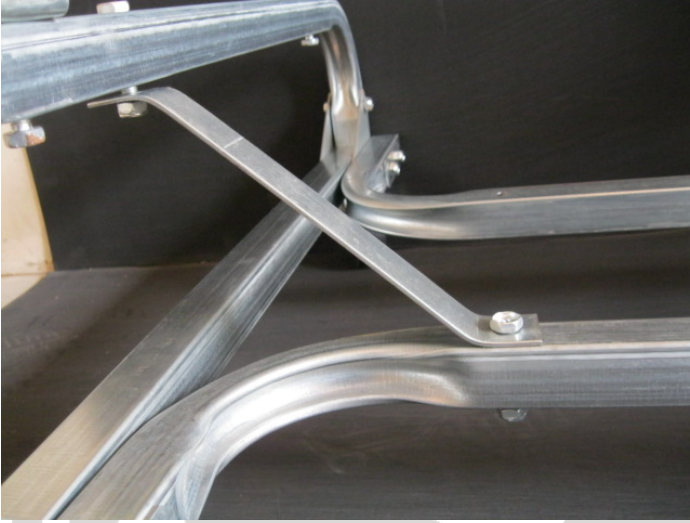


- 6) Tap the plastic caps in to cover up the wheel nuts.



SBT 12-500 Cart Assembly Instructions

- 7) Install the Z braces to connect the lower frame to the upright frames, brackets mount on the underside of the end uprights and on top of the lower frame tubes.



- 8) The cart starts to take shape, use the below picture as reference.



***Now that everything is assembled, go back and tighten all of the hardware.**