

# GTX<sup>†</sup> 230

Comfort, control and power are always in style.



Blue Abyss / Gulfstream Blue

Rotax® 1630 ACE™ - 230

ST3™ Hull

iDF - Intelligent Debris-Free Pump System

## CAPACITY

Rider capacity	3
Weight capacity	273 kg
Fuel capacity	70 L
Glove box	2.9 L
Front bin	96 L
Storage capacity - Total	98.9 L

## DIMENSIONS

Length (bumper to bumper)	345.1 cm
Width	125 cm
Height	114 cm

## HULL

Type	ST3™ Hull
Material	Fiberglass

## OTHER FEATURES

- Ergolock™ two-piece seat with stepped design
- Seat strap
- iBR® - Intelligent Brake & Reverse
- iDF - Intelligent Debris Free System
- VTS™ (Variable Trim System)
- Boarding ladder
- RF D.E.S.S.™ key
- Direct-Access Front Storage
- Watertight phone compartment
- LinQ™ attachment system
- BRP Audio - premium system (optional or standard standard with Gulfstream Blue Premium)
- Wide-angle mirrors
- Handle Grips with palm rest
- Footwell carpets
- Large swim platform
- USB Port (standard with Gulfstream Blue Premium)
- Tilt steering
- Ski tow eye

\*Electronic brake, neutral and reverse.

† Bin organizers are not included.

† GTX is a trademark of Castrol Limited used under license.

† Bluetooth is a registered trademark owned by Bluetooth SIG, Inc. and any use of such trademarks by BRP is under license.

## ROTAX ENGINE

1630 ACE™ - 230

Displacement	1,630 cc
Power (hp)	230 hp
Intake system	Supercharged with external intercooler
Cooling	Closed-Loop Cooling System (CLCS)
Reverse system	Electronic iBR*
Starter	Electric
Fuel type	95 octane
Throttle system	iTC™ (Intelligent Throttle Control)
Exhaust System	D-Sea-Bel™ system

## GAUGE

Type of gauge	7.6" wide digital display, 7.8" wide LCD display (standard with Gulfstream Blue Premium)
Main functions	<ul style="list-style-type: none"> <li>BRP Connect (standard with Gulfstream Blue Premium)</li> <li>Music (standard with Gulfstream Blue Premium)</li> <li>Navigation (standard with Gulfstream Blue Premium)</li> <li>Bluetooth<sup>†</sup> connectivity (standard with Gulfstream Blue Premium)</li> <li>Speedometer</li> <li>RPM</li> <li>Clock</li> <li>VTS™</li> <li>Fuel consumption (standard with Gulfstream Blue Premium)</li> <li>Fuel autonomy</li> <li>Vehicle hours</li> </ul>
iTC System - mode	<ul style="list-style-type: none"> <li>Sport mode</li> <li>ECO® mode</li> <li>Slow mode</li> <li>Speed regulator</li> </ul>

## WEIGHT

Dry weight (oil, coolant, no fuel)	367 kg 376 kg (standard with Gulfstream Blue Premium)
Power to weight ratio (HP / Kg)	0.63

## WARRANTY


BRP limited warranty covers the watercraft for two years.

# SEA-DOO®

## KEY FEATURES

- Rotax® 1630 ACE™ - 230
- ST3™ Hull
- iDF - Intelligent Debris-Free Pump System
- iBR® - Intelligent Brake & Reverse\*
- Variable Trim System (VTS™)
- LinQ™ attachment system
- Boarding ladder
- Direct-access front storage
- Watertight phone compartment
- Tech Package (standard with Gulfstream Blue Premium):  
BRP Audio - premium system & Full color 7.8" wide display, USB port
- BRP Audio - premium system (standard with Gulfstream Blue Premium)



 Blue Abyss and Gulfstream Blue



### iDF - Intelligent Debris Free system

An innovative, industry-first system that allows you to free your pump of weeds and debris with intuitive handlebar-activated controls.



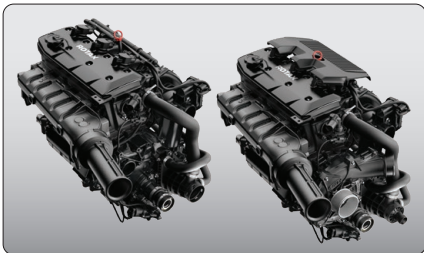
### Tech Package (standard with Gulfstream Blue Premium)

Levels up entertainment and functionality on the water. It includes a factory-installed, truly waterproof Bluetooth® audio system, a 7.8" color display and a usb port.



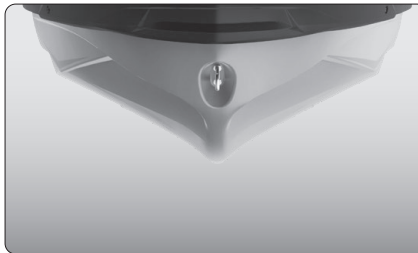
### Swim platform with integrated LinQ™ system

Exclusive quick-attach system on the largest swim platform in the industry that allows for easy installation of accessories.



### ROTAX® 1630 ACE™ - 230

The Rotax® 1630 ACE engine block is offered in two configurations on this versatile platform. The 230 hp supercharged version allows you to level up the performance to your liking.



### ST3™ Hull

An innovative hull that sets the benchmark for rough water handling, stability, and offshore performance.



### Direct-Access Front Storage

All your gear within arm's reach thanks to a 96 L front storage area, easily accessible from a seated position. Simply raise the handlebars to access essentials for any adventure.