

GTX[†] Limited 325

The standard for touring performance.



- White Pearl Premium
- Teal Metallic

Rotax® 1630 ACE™ - 325

ST3™ Hull

BRP premium audio system

CAPACITY

Rider capacity	○○○
Weight capacity	273 kg
Fuel capacity	70 L
Glove box	2.9 L
Front bin	96 L
Storage capacity - Total	98.9 L

DIMENSIONS

Length (bumper to bumper)	345.1 cm
Width	125 cm
Height	114 cm

HULL

Type	ST3™ Hull
Material	Fiberglass

OTHER FEATURES

- Ergolock™ two-piece seat with stepped design
- Seat strap
- iBR® - Intelligent Brake & Reverse
- iDF - Intelligent Debris Free System
- VTS™ (Variable Trim System)
- Boarding ladder
- RF D.E.S.S.™ key
- Direct-Access Front Storage
- Storage bin organiser
- Watertight phone compartment
- LinQ™ attachment system
- BRP premium audio system
- 2 Pop-Up Cleats
- Knee pads
- Wide angle mirrors
- Handle Grips with palm rest
- Footwell carpets
- Large swim platform
- USB port
- Hydraulic steering damper
- Tilt steering
- Ski tow eye

ROTAX ENGINE

1630 ACE™ - 325

Displacement	1,630 cc
Power (hp)	325 hp
Intake system	Supercharged with external intercooler
Cooling	Closed-Loop Cooling System (CLCS)
Reverse system	Electronic iBR®*
Starter	Electric
Fuel type	98 octane
Throttle system	iTC™ (Intelligent Throttle Control)
Exhaust System	D-Sea-Bel™ system

GAUGE

Type of gauge	10.25 in. touchscreen display with BRP Connect	
Main functions	• BRP Connect	• VTS™
	• Music	• Fuel consumption
iTC System - mode	• Navigation	• Fuel autonomy
	• Bluetooth+ connectivity	• Water Temperature
	• Speedometer	• Depth finder
	• RPM	• Vehicle hours
	• Clock	
iTC System - mode	• Sport mode	• Slow mode
	• ECO® mode	• Speed regulator

WEIGHT

Dry weight (oil, coolant, no fuel)	385 kg
Power to weight ratio (HP / Kg)	0.84

WARRANTY

BRP limited warranty covers the watercraft for two years.

*Electronic brake, neutral and reverse.
 †GTX is a trademark of Castrol Limited used under license.
 ‡Bluetooth+ is a registered trademark owned by Bluetooth+ SIG, Inc. and any use of such trademarks by BRP is under license.



KEY FEATURES

- Rotax® 1630 ACE™ - 325
- ST3™ Hull
- BRP premium audio system
- iDF - Intelligent Debris Free Pump System
- Direct-access front storage
- 10.25 in. touchscreen display with BRP GO!
- 2 Pop-Up Cleats
- Hydraulic Steering Damper
- USB port
- Watercraft cover
- Knee pads
- Exclusive coloration and more



○ White Pearl Premium



● Teal Metallic



GTX[®] Limited special features

USB port, watercraft cover, storage bin organizer, knee pads, exclusive coloration and more.



BRP Audio - premium system

A factory-installed, truly waterproof Bluetooth* audio system for an extra dose of fun and entertainment on the water.



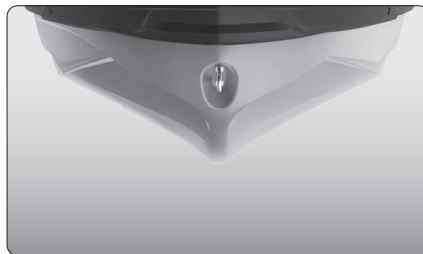
iDF - Intelligent Debris Free system

An innovative, industry-first system that allows you to free your pump of weeds and debris with intuitive handlebar-activated controls.



ROTAX® 1630 ACE™ - 325 ENGINE

The Rotax® 1630 ACE™-325 is the industry's most powerful PWC engine from factory. With its 325 hp, this engine delivers incredible acceleration and power thanks to innovative engineering for uncompromised offshore performance.



ST3™ Hull

An innovative hull that sets the benchmark for rough water handling, stability, and offshore performance.



10.25 in Touchscreen Display with BRP Connect

Bring your on-water experience to another level with this premium and elegant touchscreen display developed specifically for Sea-Doo riders. With enhanced connectivity and intuitivity, it features driving statistics, compass, marine navigation with the BRP GO! app, music and much more.

*GTX is a trademark of Castrol Limited used under license.

Bluetooth is a registered trademark owned by Bluetooth® SIG, Inc. and any use of such trademarks by BRP is under license.